

# Hostilities in the Gaza Strip and Israel - reported impact | Day 156

11 Mar 2024

Day 156

## KEY FIGURES



**31,112**  
Palestinian fatalities

Source: MoH Gaza



**~1.7 million**  
internally displaced persons  
(75% of Gaza)

Source: UNRWA



**25** people  
including 21 children died of  
malnutrition & dehydration

Source: MoH Gaza



**0** hours  
Full electricity blackout

Source: GEDCO



# REPORTED CASUALTIES

(Cumulative) as of 11 March 2024

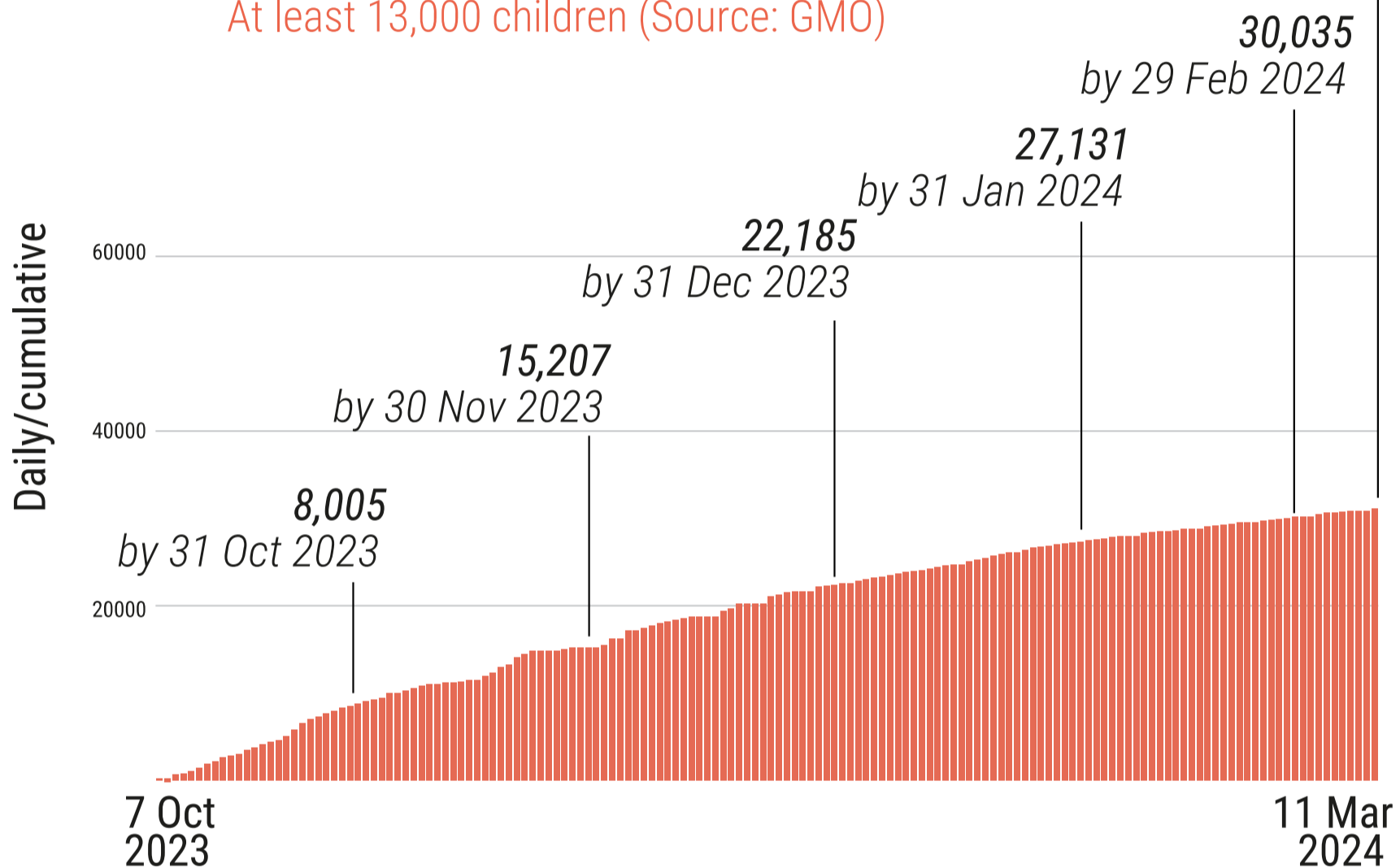
## Palestinians\*

# 31,112

Reported fatalities including

At least 9,000 women (Source: MoH Gaza)

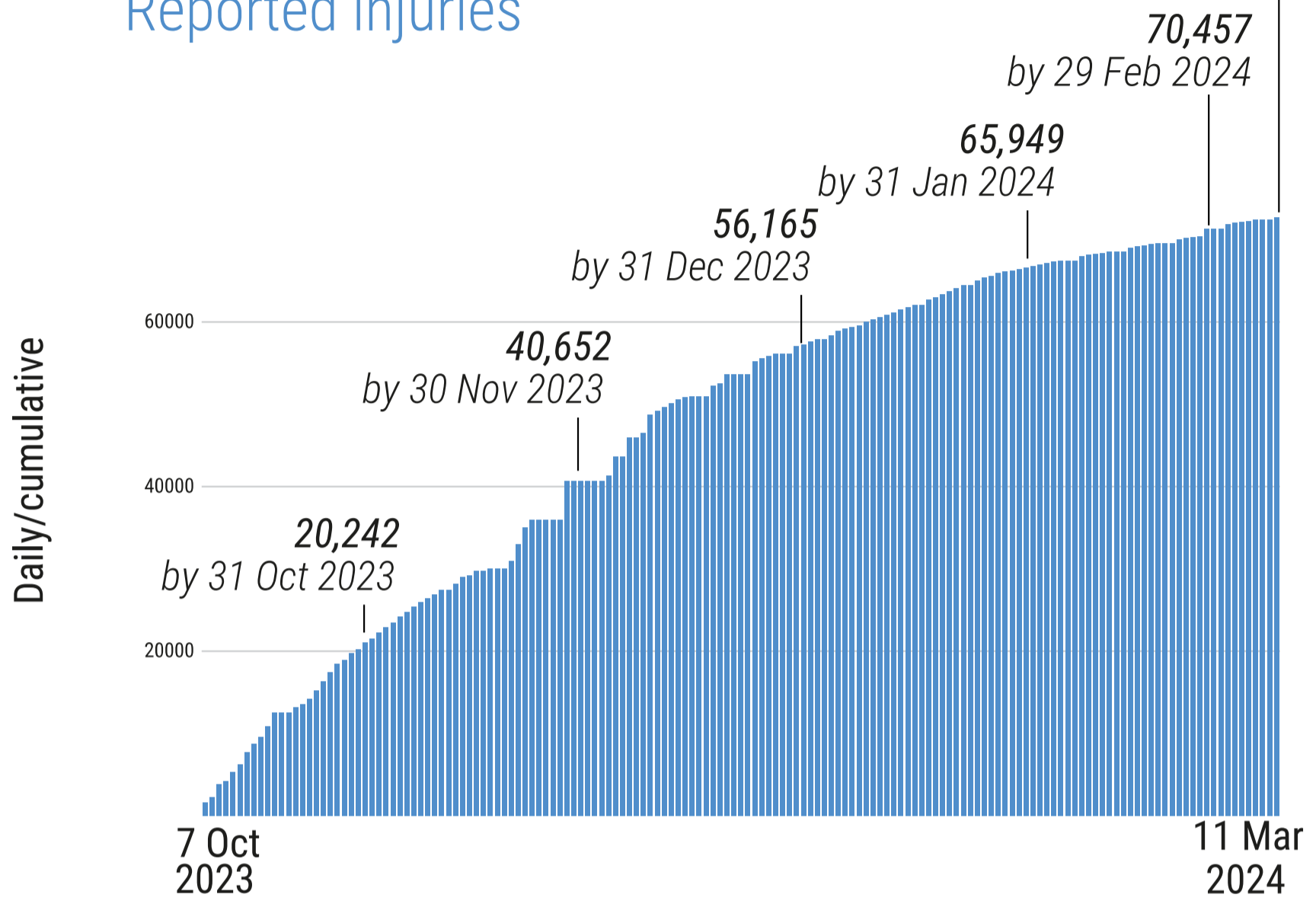
At least 13,000 children (Source: GMO)



Not including more than **7,000** reported missing or under the rubble (Source: GMO)

\*Source: MoH Gaza

# 72,760 Reported injuries





\*Source: MoH Gaza

\*Source: MoH Gaza

# Israelis\*\*

## Israel

  Over **1,200\*\*\*** Reported fatalities

  1,162 identified fatalities,  
including at least 33 children

  ~ **5,400** Reported injuries

## Gaza\*\*\*\*

  **247** Reported fatalities   **1,474** Reported injuries

**134 hostages remain in Gaza**

\*\* According to Israeli media citing official sources

\*\*\* This includes fatalities on 7 October and the immediate aftermath, including foreign nationals.

\*\*\*\* The reported Israeli casualties are soldiers killed or injured since the start of the ground operation.



## HEALTH

- **12** hospitals partially functioning (6 in north and 6 in south of Wadi Gaza).
- **2 out of 3** field hospitals are fully functional.
- **~24%** of primary health care facilities are functional.
- **>300,000** reported cases of acute respiratory infections.
- **>200,000** reported cases of acute watery diarrhea.
- **17** Emergency Medical Teams (EMTs) are operational.



## NUTRITION

- **25** people, including 21 children died of malnutrition & dehydration (Source: MoH Gaza).
- **~16%** of children under the age of two in northern Gaza suffer from acute malnutrition.
- **~5%** of children under the age of two in Rafah suffer from acute malnutrition.



## EDUCATION\*

- **625,000** students with no access to education.
- **>5,000** students and **>240** teachers have been killed.
- **>60%** of schools sustained damage (~350 out of 563).

*\*Source: MoE, as of 1 February*



## PROTECTION

- **~1.7 million** internally displaced persons.

- **>1 million children** in need of mental health and psycho-social support.
- **~17,000** children are unaccompanied or separated from their parents



## FOOD SECURITY\*

- **2.2 million** people facing crisis or worse levels of food insecurity (*IPC Phase 3 or above*).
- **1.17 million** people facing emergency levels of food insecurity (*IPC Phase 4*).
- **>0.5 million** people facing catastrophic levels of food insecurity (*IPC Phase 5*).

*\*Source: IPC, 21 December*

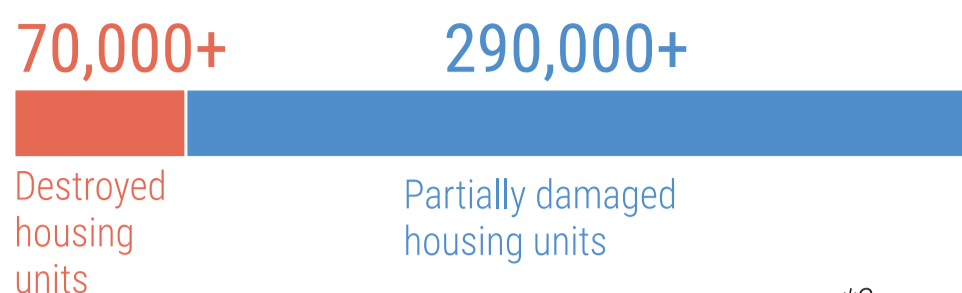


## WATER AND SANITATION

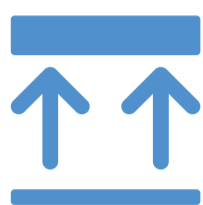
- **One out of three** water pipelines coming from Israel is operational, only at **42%** of its full capacity.
- **83%** of groundwater wells are not operating.
- **All** wastewater treatment systems are non-operational; one of them is partially working.
- **No access** to clean water in the northern governorates.
- **Two out of three** main water desalination plants are partially functional.
- **~57%** of assessed WASH facilities damaged/destroyed.

## REPORTED DAMAGE\*

- **Over 60%** of housing units.
- **At least 3** churches and **217** mosques.
- **155** health facilities. (Source: MoH Gaza)
- **126** ambulances. (Source: MoH Gaza)



\*Source: GMO



## HUMANITARIAN OPERATI

- **165** UN staff killed:  
UNRWA: **162**; WHO: **1**; UNDP: **1**; UNOPS: **1**
- **364** health workers killed. (Source: MoH Gaza)
- **48** Civil Defence killed while on duty.\*
- **14** PRCS staff killed. (Source: PRCS)

\*Source: GMO as of 4 Ma



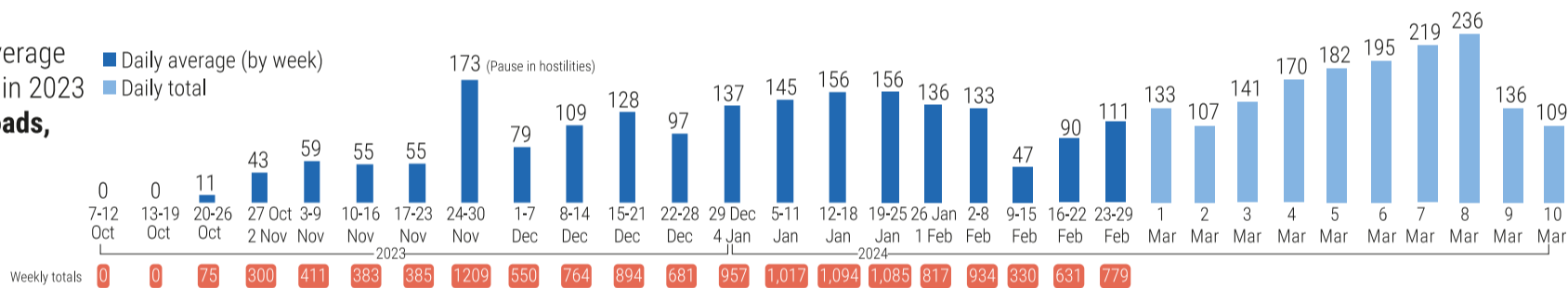


# MOVEMENT AND ACCESS

- In February, **40%** of aid missions in Gaza to areas requiring coordination were denied or impeded access.
- **>8,000** patients are currently on the waiting list for medical referral abroad.
- **2,613** medical referrals abroad, including 1,698 wounded and 915 ill, along with 1,785 companions. (Source: WHO)

## INCOMING TRUCKLOADS

The pre-crisis average per working day in 2023 was **500 truckloads, including fuel.**



Disclaimer: The UN has so far not been able to produce independent, comprehensive, and verified casualty figures; the current numbers have been provided by the Ministry of Health or the Government Media Office in Gaza and the Israeli authorities and await further verification. Other yet-to-be verified figures are also sourced.