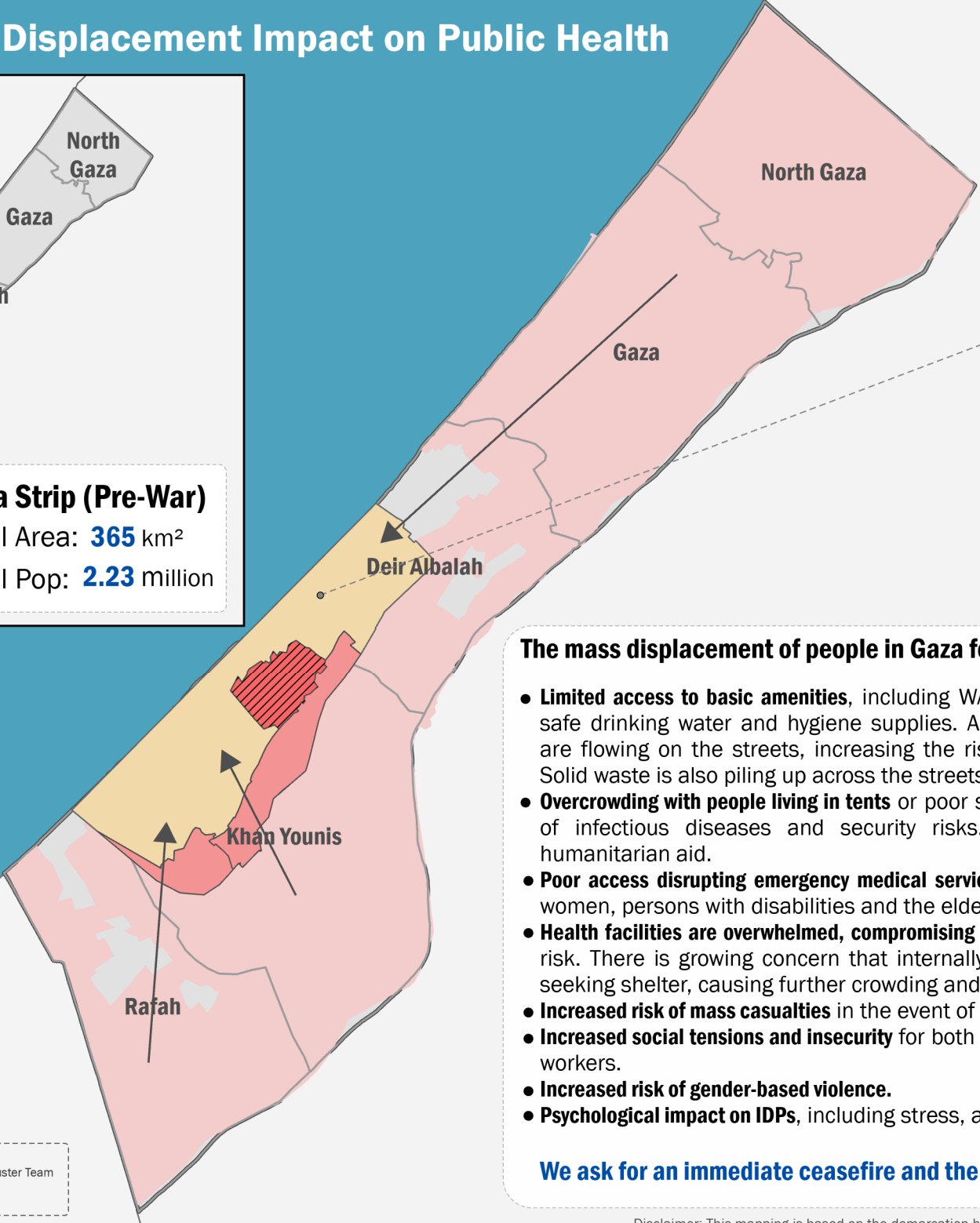
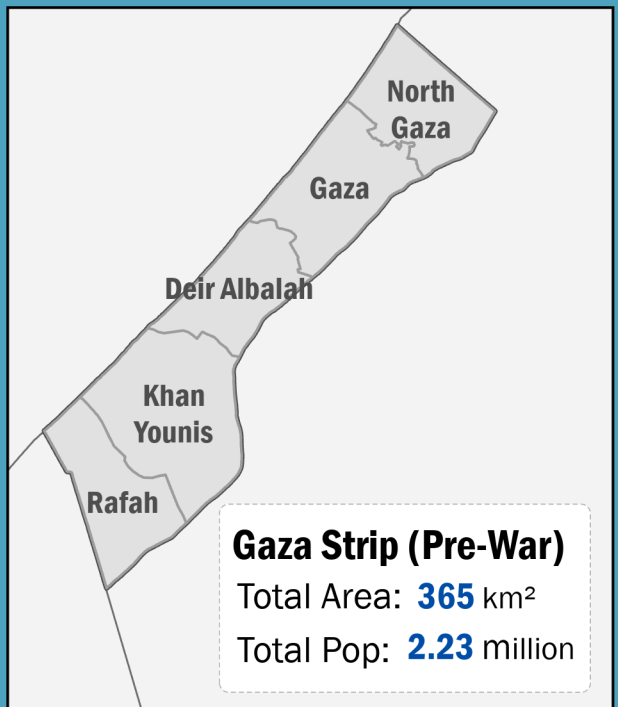




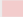


# Forced Mass Displacement Impact on Public Health



**Area people have been ordered to move to**

**1.5-1.7** million      **42** km<sup>2</sup>  
Estimated Population      (11.5% of Gaza Strip Area)

**Estimated Population Density**  
**35,000 - 40,000**  
People/km<sup>2</sup>  
(Around 6 Times Gaza Strip Pre-war Population Density)

- Areas**
-  Governorate Boundaries
  -  Area people have been ordered to move to
  -  Area With Evacuation Orders / High Risk Areas / No Go Zone
  -  Previous Shrinkage Area (13.4 km<sup>2</sup>)
  -  New Shrinkage Area (5.6 km<sup>2</sup>)

## The mass displacement of people in Gaza forcing them into a small area results in:

- **Limited access to basic amenities**, including WASH facilities, with a current limited supply of safe drinking water and hygiene supplies. Additionally, untreated wastewater and sewage are flowing on the streets, increasing the risk of waterborne diseases for the population. Solid waste is also piling up across the streets increasing risk of vector-borne diseases.
- **Overcrowding with people living in tents** or poor shelter infrastructure, leading to increased risk of infectious diseases and security risks. It also makes it difficult for delivery of humanitarian aid.
- **Poor access disrupting emergency medical service access** and response. In addition, pregnant women, persons with disabilities and the elderly have added difficulties accessing services.
- **Health facilities are overwhelmed, compromising the quality of care** and putting patients' lives at risk. There is growing concern that internally displaced persons (IDPs) will flood hospitals seeking shelter, causing further crowding and affecting health service delivery.
- **Increased risk of mass casualties** in the event of an attack on the heavily populated area.
- **Increased social tensions and insecurity** for both IDPs and humanitarian operations, assets and workers.
- **Increased risk of gender-based violence.**
- **Psychological impact on IDPs**, including stress, anxiety, and mental trauma.

**We ask for an immediate ceasefire and the forced mass displacement of people to stop**



Data Source: WHO oPt  
Map Production: oPt Health Cluster Team  
Map Date: 16/8/2024  
<https://opt.healthcluster.org>