

DAY 313

Disclaimer: Figures that are yet-to-be verified by the UN are attributed to their source. Casualty numbers have been provided by the Ministry of Health (MoH) and the Israeli authorities. The fatality breakdowns currently cited are those that the MoH in Gaza has fully identified as of 30 June out of the higher number of casualties they report. The latest updates are also available on the Health Cluster's [Unified Dashboard](#).

KEY FIGURES



39,965  
Palestinian fatalities

Source: MoH Gaza



~1.9 million  
internally displaced persons  
(90% of Gaza)

UN estimate



495K

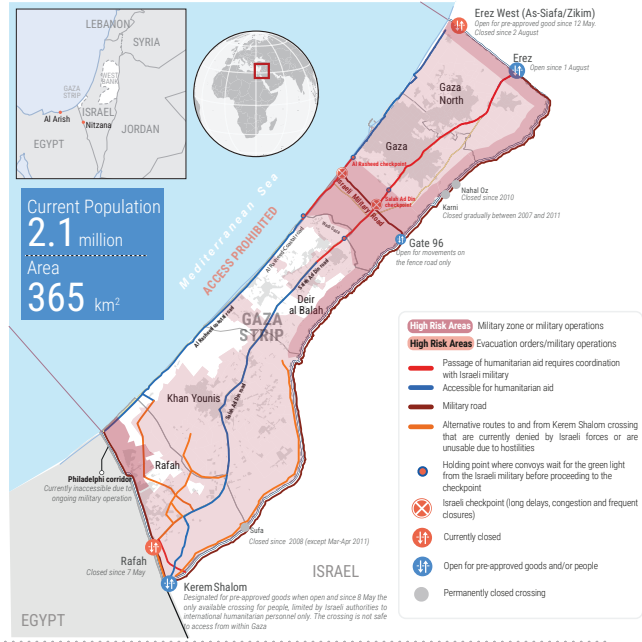
People facing catastrophic levels  
of food insecurity (IPC Phase 5).

Source: IPC projection for 1 May - 30 September 2024



0 hours  
Full electricity blackout

Source: GEDCO

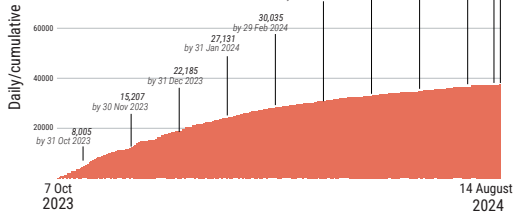


REPORTED CASUALTIES (Cumulative) as of 14 August 2024

Palestinians\*

39,965  
Reported fatalities include

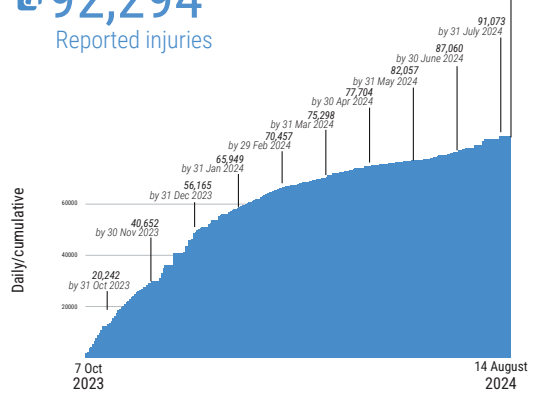
32,280 identified as of 30 June as:  
 12,927 men, 5,956 women, 10,627 children, 2,770 elderly



Separately, more than 10,000 people reported missing or under the rubble (source: GMD and PCD).

\*Source: MoH Gaza

92,294  
Reported injuries



\*Source: MoH Gaza

Israelis\*\*

Israel  
 Over 1,200\*\*\* Reported fatalities  
 1,162 identified fatalities, including at least 33 children

~5,400 Reported injuries

Gaza\*\*\*\*  
 330 Reported fatalities, 2,206 Reported injuries  
 estimated 115 hostages remain in Gaza

\*\* According to Israeli media citing official sources.  
 \*\*\* This includes fatalities on 7 October and the immediate aftermath, including foreign nationals.  
 \*\*\*\* The reported Israeli casualties are soldiers killed or injured since the start of the ground operation.

FOOD SECURITY

- 96% of the analyzed population (2.15 million) is projected to face crisis or worse levels of food insecurity (IPC 3 or above), including:
  - 745K people facing emergency levels of food insecurity (IPC Phase 4).
  - 495K people facing catastrophic levels of food insecurity (IPC Phase 5).
- 60-70% of meat and dairy-producing livestock killed or prematurely slaughtered (source: FAO).
- 65% of cropland & 33% of greenhouse area damaged, (source: FAO, UNOSAT)
- ~70% of the fishing fleet destroyed (Food Security Sector, August 2024) \*Source: IPC projection for 16 June - 30 September 2024

PROTECTION

- ~1.9 million internally displaced persons, (UN estimate).
- >1 million children in need of mental health and psycho-social support, (source: UNICEF).
- ~17,000 children are unaccompanied or separated, (source: UNICEF).
- At least 286 aid workers killed (279 nationals, 7 foreigners), some in the line of duty, including:
  - 209 UN staff - UNRWA: 205; WHO: 1; UNDP: 1; UNOPS: 1; UNSSD: 1.
  - 33 PRCs staff and volunteers, including 19 while on duty.
  - At least 44 other aid workers.
- 885, including some also counted under aid workers above (source: MoH Gaza).
- 80 Civil Defence staff killed while on duty (source: PCD).
- 168 journalists and media workers killed (source: GMD).

WATER AND SANITATION\*

- All three water connection points (Mekero) coming from Israel are partially operational, at 82-83% of their capacity.
- Two out of three water desalination plants are intermittently operational.
- 104,000 m³ of water produced and supplied on average per day between 5 August and 11 August, or just about a quarter of water supply prior to October 2023. This includes 59,500 m³ of water produced by water wells (municipal, UNRWA, private).
- 395,000 tons of accumulated solid waste and two landfills remain inaccessible. \*Source: WASH Cluster

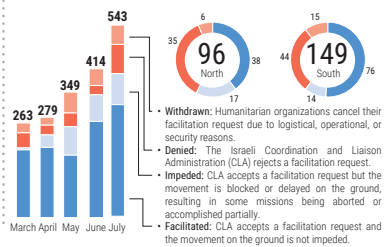
HEALTH\*

- 16 hospitals partially functional (3 in North Gaza, 7 in Gaza, 3 in Deir al Balah, 3 in Khan Younis)
- 20 out of 36 hospitals out of service.
- 8 field hospitals functional, including 4 fully and 4 partially (1 in Deir al Balah, 5 in Khan Younis, and 2 in Rafah).
- 42% of primary health care centres are partially functional (53 out of 126).
- 38% (10 out of 26) of UNRWA health centres are operational (source: UNRWA, as of 22 July).
- 16 Emergency Medical Teams (EMTs) deployed, including two in northern Gaza.
- ~995,000 cases of acute respiratory infections (as of 7 July).
- ~577,000 cases of acute water diarrhea (as of 7 July).
- ~107,000 cases of acute jaundice syndrome.
- 43% (5,951 out of 13,909) of critical patients who submitted requests for medical evacuation were approved; these include 36% (5,001) who were medically evacuated abroad as of 5 August.
- As of 31 July, it is estimated that 12,000 patients have not been evacuated since the closure of Rafah Crossing on 7 May. On two occasions, 106 patients have been exceptionally evacuated via: Kerem Shalom Crossing, including 21 patients evacuated on 27 June and 85 patients on 30 July. \*Source: WHO, unless otherwise noted

REPORTED DAMAGE

- >60% of residential buildings & >80% of commercial facilities (source: World Bank, as of Jan 2024).
- 65% of the total road network (source: UNOSAT, as of 29 May).
- 190 UNRWA installations. (source: UNRWA).
- 130 ambulances (source: MoH Gaza).

HUMANITARIAN ACCESS (1-13 Aug)  
 Missions requiring coordination with the Israeli authorities

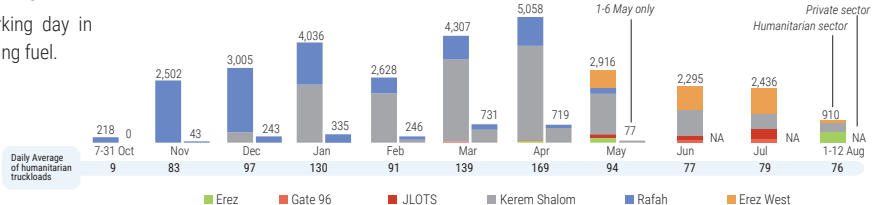


EDUCATION\*

- ~625,000 students with no access to education.
- 39,000 12<sup>th</sup> grade students were deprived of the opportunity to take their General Secondary Examinations (also known as Tawjihi).
- 9,565 students and 402 educational staff killed and >15,129 students and 2,371 teachers injured (source: MoE, as of 13 August).
- 85% of school buildings (477 out of 564) directly hit or damaged and require either full reconstruction or major rehabilitation (as of 6 July). \*Source: Education Cluster, unless otherwise noted

INCOMING TRUCKLOADS\*

The pre-crisis average per working day in 2023 was 500 truckloads, including fuel.



\*Commercial trucks are not captured in the totals following 7 May, as the UN has been unable to directly observe the arrival of private sector cargo at Kerem Shalom crossing. Fuel is not included.