

DAY 438

Disclaimer: Figures that are yet-to-be verified by the UN are attributed to their source. Casualty numbers have been provided by the Ministry of Health (MoH) and the Israeli authorities. The fatality breakdowns currently cited are those that the MoH in Gaza has fully identified as of 7 October 2024 out of the higher number of casualties they report. The latest casualty updates are also available on the Health Cluster's [Unified Dashboard](#).

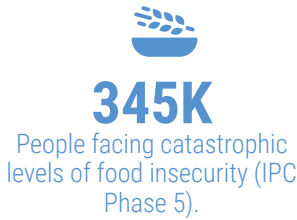
KEY FIGURES



Source: MoH Gaza



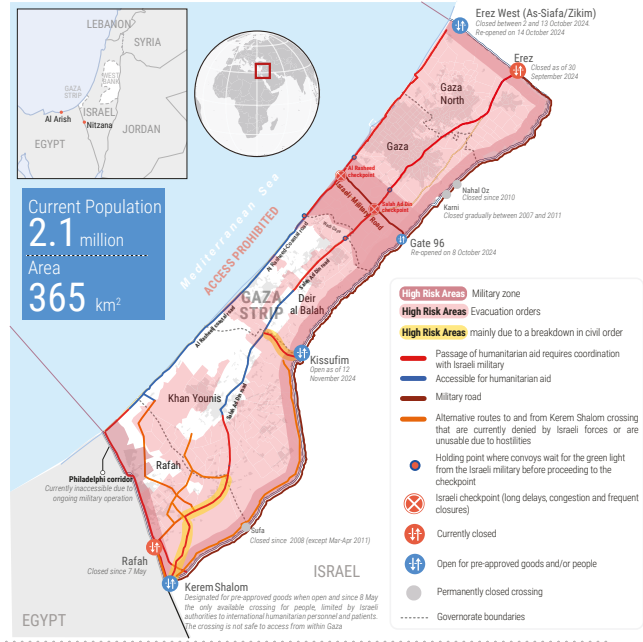
Source: UN Estimate



Source: IPC Projection, November 2024 - April 2025

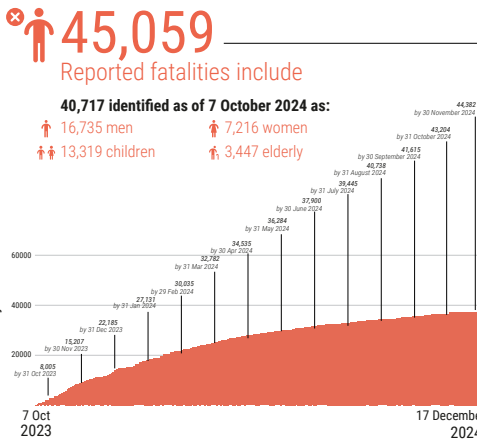


Source: UN Estimate



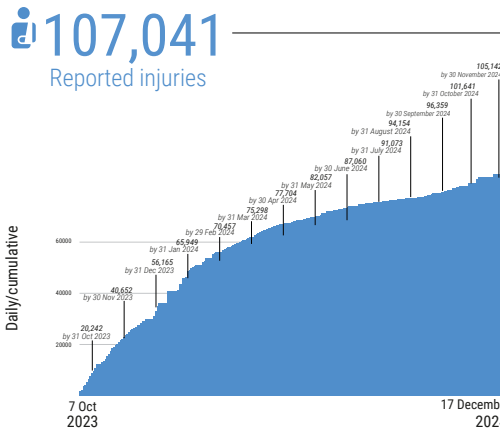
REPORTED CASUALTIES (Cumulative) as of 17 December 2024

Palestinians*



Separately, more than **10,000** people reported missing or under the rubble (source: GMD and PCD).

*Source: MoH Gaza



*Source: MoH Gaza

Israelis**



** According to Israeli media citing official sources.
*** This includes fatalities on 7 October and the immediate aftermath, including foreign nationals.
**** The reported Israeli casualties are soldiers killed or injured since the start of the ground operation (source: Israeli military website).

FOOD SECURITY

- Famine thresholds may have already been crossed, or else will be in the near future in northern Gaza (Source: IPC Famine Review Committee alert, 8 November).
- 91%** of the analyzed population (1.95 million) is projected* to face high levels of acute food insecurity classified in IPC Phase 3 (Crisis) or above, including:
 - 876K** people facing emergency levels of food insecurity (IPC Phase 4).
 - 345K** people facing catastrophic levels of food insecurity (IPC Phase 5).
- 68%** of cropland, **52%** of agricultural wells, and **44%** of greenhouse area damaged (source: UNOSAT, Aug 2024; FAO, 1 Sep 2024).
- ~70%** of the fishing fleet destroyed (Food Security Sector, August 2024).
- ~15,000 (95%)** of Gaza's cattle have died, with nearly all calves slaughtered, **<25,000** sheep (**43%**), **~3,000** goats (**37%**), and **34,000** birds (**1%**) remain alive, (source: FAO assessment, March-August 2024).

* Source: IPC Projection, November 2024 - April 2025

PROTECTION

- >1 million children** in need of mental health and psycho-social support (source: UNICEF).
- At least **359** aid workers killed (352 nationals, 7 foreigners), some in the line of duty, including:
 - 258** UN staff - UNRWA: 254; WHO: 1; UNDP: 1; UNOPS: 1; UNSS: 1.
 - 34** PRCs staff and volunteers, including 19 while on duty.
 - At least **67** other aid workers.
- 1,057** health workers killed, including some also counted under aid workers above (source: MoH Gaza).
- 94** Civil Defence staff killed while on duty (source: PCD).
- 188** journalists and media workers killed (source: PJS).
- 190** UNRWA installations damaged (source: UNRWA).

SHELTER*

- 87% (411,000)** of housing units were destroyed (**141,000**) or severely/partially damaged (**270,000**).
- 1.5 m²** average space per person in IDP shelters, below the minimum emergency indicator of 3.5 m² per person.
- 1,875,000** people in need of emergency shelter and essential household items.
- >450,000** people in flood-prone areas. (source: UN estimate).
- 945,000** people in need of winterization support.

*Source: Shelter Cluster, unless otherwise noted

HEALTH*

- 47%** (17 out of 36) of hospitals partially functional (2 in North Gaza, 8 in Gaza city, 3 in Deir al Balah, 4 in Khan Younis).
- 11** field hospitals functional, including 6 fully and 5 partially (4 in Deir al Balah, 5 in Khan Younis, and 2 in Rafah).
- 37%** (51 out of 137) of primary health care centres functional, including 5 fully and 46 partially.
- 26%** (7 out of 27) of UNRWA health centres functional (source: UNRWA, as of 8 December).
- 18** Emergency Medical Teams (EMTs), including 3 in Gaza city, 15 in southern Gaza, and none in North Gaza.
- 130** ambulances damaged (source: MoH Gaza).
- 39%** (6,075 out of 15,600) of critical patients who submitted requests for medical evacuation have had their requests approved; these include **33%** (5,138 out of 15,600) who were medically evacuated abroad as of 26 August.
- >14,000** patients need medical evacuation abroad (10 Dec 2024). In total, since the closure of Rafah Crossing on 7 May, **378** patients including **217** children have been exceptionally evacuated outside Gaza.

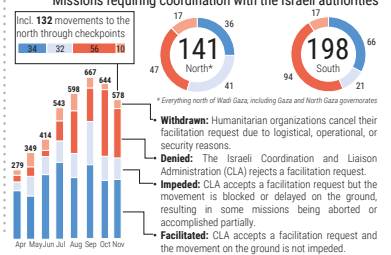
*Source: Health Cluster, unless otherwise noted

EDUCATION*

- ~658,000** students with no access to formal education.
- 11,893** students and **466** educational staff killed and **>18,713** students and **2,539** teachers injured (source: MoE, as of 17 December).
- At least **88%** of school buildings (**496** out of **564**) require either full reconstruction or major rehabilitation (as of 1 December 2024).
- 35** university buildings were destroyed and **57** were damaged (source: MoE, as of 7 October 2024).

*Source: Education Cluster, unless otherwise noted

HUMANITARIAN ACCESS (1-16 Dec)



- Incl. 132** movements to the north through checkpoints (32 in North, 96 in South).
- Withdrawal:** Humanitarian organizations cancel their facilitation request due to logistical, operational, or security reasons.
- Denied:** The Israeli Coordination and Liaison Administration (CLA) rejects a facilitation request.
- Impeded:** CLA accepts a facilitation request but the movement is blocked or delayed on the ground, resulting in some missions being aborted or accomplished partially.
- Facilitated:** CLA accepts a facilitation request and the movement on the ground is not impeded.

NUTRITION*

- Over **96%** of children aged 6-23 months and women are not meeting their nutrient requirements due to lack of minimum diet diversity.
- 290,000** children under five and **150,000** pregnant and breastfeeding women require feeding and micronutrient supplements.
- >60,000** children are estimated to require treatment for acute malnutrition in 2025.

*Source: Nutrition Cluster

WATER AND SANITATION*

- 87,574 m³** of water produced and supplied on average per day between 24 November and 7 December, less than a quarter of water supply prior to October 2023. This includes a daily average of **35,659 m³** of water produced by municipal water wells.
- 1 million** people are at risk of sanitation-related threats, including rodents and pests (**76%**), solid waste (**54%**), sewage (**46%**), and human waste (**34%**).
- 62% (1.4 million)** of people receive less than the recommended 6 litres per person per day for drinking and cooking.
- 47%** of people receive less than the minimum recommended 15 litres per person per day for drinking, cooking, and basic hygiene.

INCOMING TRUCKLOADS*

The pre-crisis average per working day in 2023 was 500 truckloads, including fuel.

*Commercial trucks are not captured in the totals following 7 May, as the UN has been unable to directly observe the arrival of private sector cargo at Kerem Shalom crossing. Fuel is not included.

