

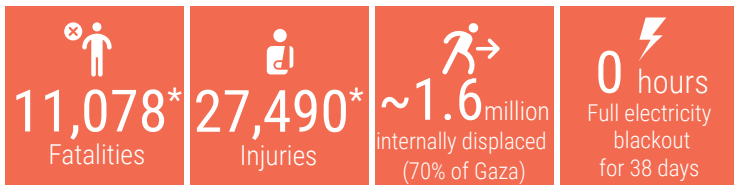
## DAY 43

### OVERVIEW

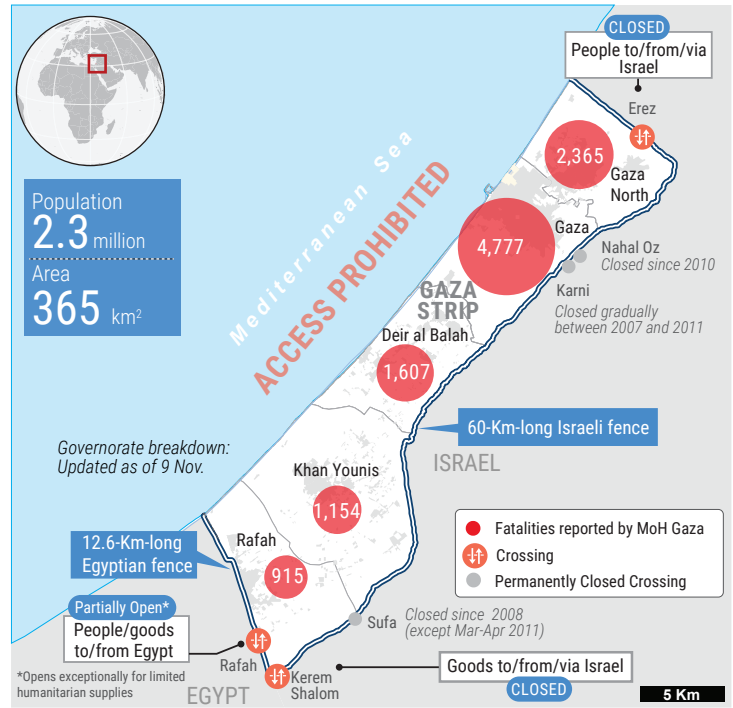
The snapshot provides a comprehensive overview of the ongoing humanitarian crisis in Gaza as of 18 November 2023, including casualties, particularly among women and children.

Significant damage has been inflicted upon critical infrastructure and essential services, affecting people's ability to maintain their dignity and basic living standards.

This snapshot highlights reported figures on the impact of hostilities on people in Gaza, where a major humanitarian crisis has unfolded.

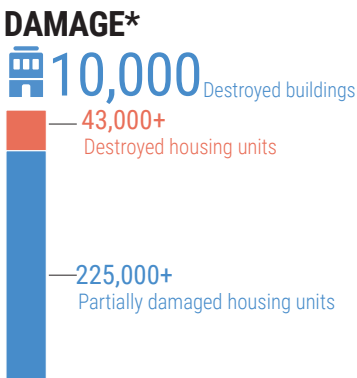
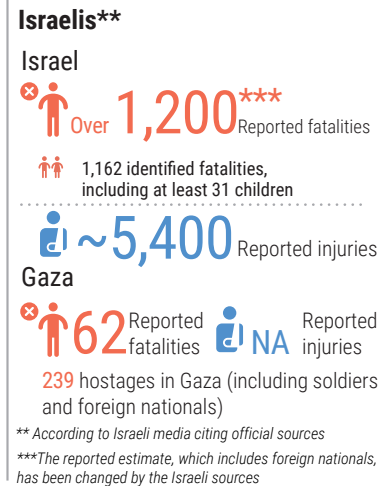
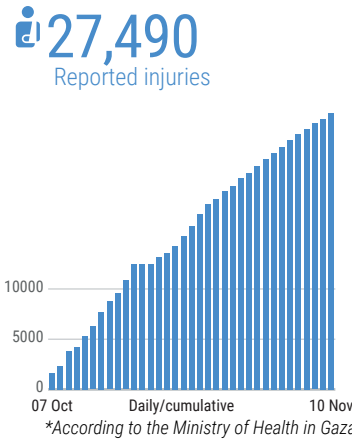
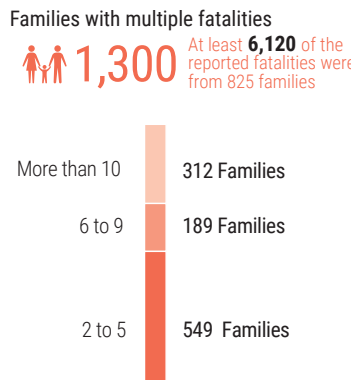


\*Reported by MoH Gaza



### REPORTED CASUALTIES (Cumulative) as of 10 November 2023

**Palestinians\*** following the collapse of services and communications at hospitals in the north, the MoH in Gaza did not update casualty figures.



- At least 45% of Gaza's housing units reportedly destroyed or damaged
- 300 education facilities reportedly damaged
- 135 health facilities attacked
- 11 bakeries reportedly destroyed
- 25 hospitals and 52 health care centres out of service
- 55 ambulances damaged
- 20 WASH facilities damaged
- At least 3 churches and 77 mosques damaged

\*Ministry of Public Works and Housing as of 18 Nov.

### BASIC SERVICES AND LIVELIHOODS

- FOOD SECURITY**
  - Lack of food in the north is of increasing concern
  - The situation is catastrophic and WFP stocks inside Gaza are running out
  - The last functioning mill in Gaza was destroyed on 15 November
- HEALTH**
  - Hospitals in the North being under heavy strikes.
  - Almost all hospitals in Gaza city and North Gaza governorates are reportedly not operational, except one.

**4-6 hours** average waiting time to receive half of normal bread portion

- WATER AND SANITATION**
  - Two pipelines coming from Israel supply about 1,100 cubic metres per hour for the south and Middle area.
  - No Access to clean water in the northern governorates. Fuel shortage impacts: 60 water wells, 2 desalination plants, sewage stations and pumps, wastewater treatment.
  - UNRWA waste removal shutting down; 400 tons daily rubbish accumulation risk.

**At high risk**  
At least 1,000 kidney failure, >2,000 cancer patients, 130 neonates in incubators

**Critical shortages**  
of drugs, blood products and supplies (Fuel at the hospitals is being severely rationed)

**EDUCATION**  
625K (100%) Students with no access to education  
Over 51% of Gaza's education facilities have been hit

### HUMANITARIAN OPERATION

- 102 UNRWA staff killed
- At least 200 health workers killed
- 22 civil defence killed while on duty
- 56 Journalists killed

### MOVEMENT AND ACCESS

The two crossings with Israel remain closed since 7 October. Rafah crossing with Egypt is partially open. Prohibition of sea access and restrictions near Israel's perimeter fence.

### INCOMING TRUCKLOADS

500 trucks including fuel pre-crisis average per working day in 2023

