

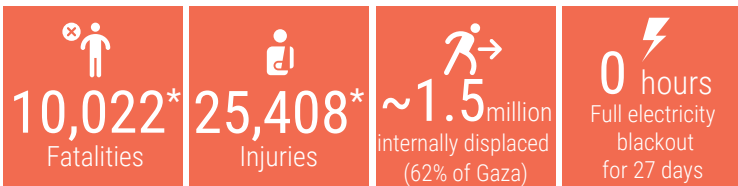
DAY 31

OVERVIEW

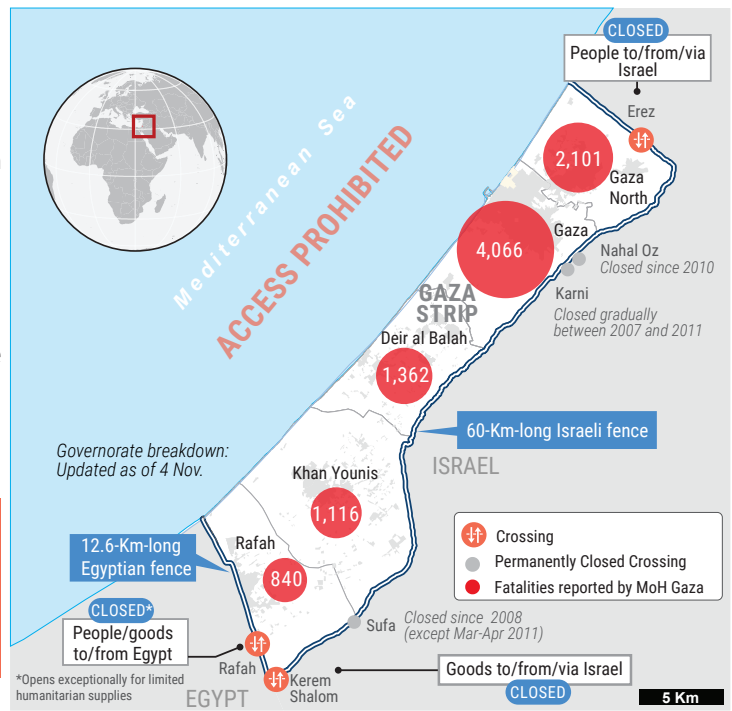
The snapshot provides a comprehensive overview of the ongoing humanitarian crisis in Gaza as of 6 November 2023, including casualties, particularly among women and children.

Significant damage has been inflicted upon critical infrastructure and essential services, affecting people's ability to maintain their dignity and basic living standards.

This snapshot highlights reported figures on the impact of hostilities on people in Gaza, where a major humanitarian crisis has unfolded.

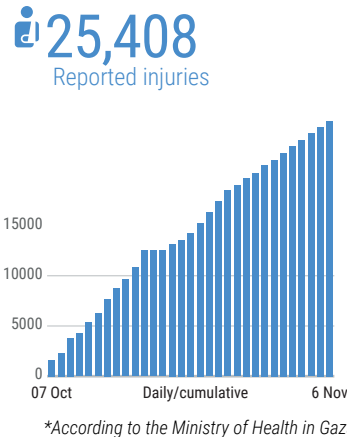
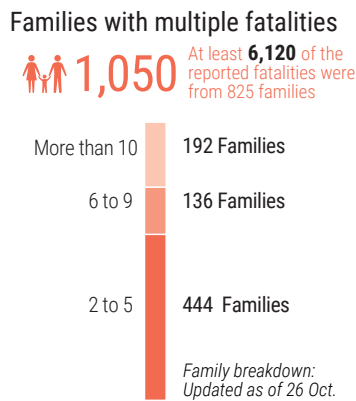


*Reported by MoH Gaza

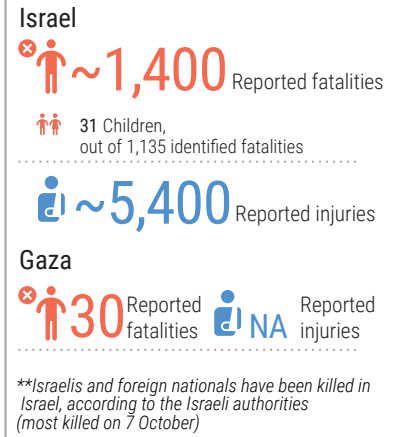


REPORTED CASUALTIES (Cumulative) as of 6 November 2023

Palestinians*



Israelis**



DAMAGE*



BASIC SERVICES AND LIVELIHOODS

FOOD SECURITY

Market stocks of essential food*: Wheat flour (**23** days), Vegetable oil (**3** days), Pulse (**3** days), Sugar (**8** days), Rice: (**1** day).

*Source: WFP

The **only** operative mill cannot transform wheat due to electricity outages

4-6 hours average waiting time to receive half of normal bread portion

WATER AND SANITATION

92% less water consumption than pre-hostilities (average)

Most of **65** sewerage pumping are not operational

50% leakage in a main water pipeline between Rafah and Khan Younis

Two of the **3** water pipelines from Israel are functioning

HEALTH

Shut down over **1/3** of the hospitals and nearly **2/3** of primary health care shut down

At high risk At least **1,000** kidney failure, **>2,000** cancer patients, **130** neonates in incubators

Critical shortages of drugs, blood products and supplies (**Fuel at the hospitals is being severely rationed**)

Evacuation orders All **13** hospitals still operational in Gaza city and Northern Gaza have received evacuation orders

EDUCATION

625K students with no access to education

Over 51% of Gaza's education facilities have been hit

HUMANITARIAN OPERATION

At least **192** health workers, **89** UNRWA staff, **18** civil defence killed while on duty, and **47** Journalists.

50 UNRWA installations damaged

MOVEMENT AND ACCESS

Closure of crossings with Egypt and Israel, Prohibition of sea access and restrictions, near Israel's perimeter fence.

INCOMING TRUCKLOADS

500 trucks pre-crisis average per working day in 2023

526 trucks with humanitarian aid entered Gaza since 21 October.