

# Hostilities in the Gaza Strip and Israel - reported impact | Day 163

18 Mar 2024

Day 163

## KEY FIGURES



**31,726**  
Palestinian fatalities

Source: MoH Gaza



**~1.7 million**  
internally displaced persons  
(75% of Gaza)

Source: UNRWA



**31** people  
including 27 children died of  
malnutrition & dehydration.

Source: MoH Gaza



**0** hours  
Full electricity blackout

Source: GEDCO



# REPORTED CASUALTIES

(Cumulative) as of 18 March 2024

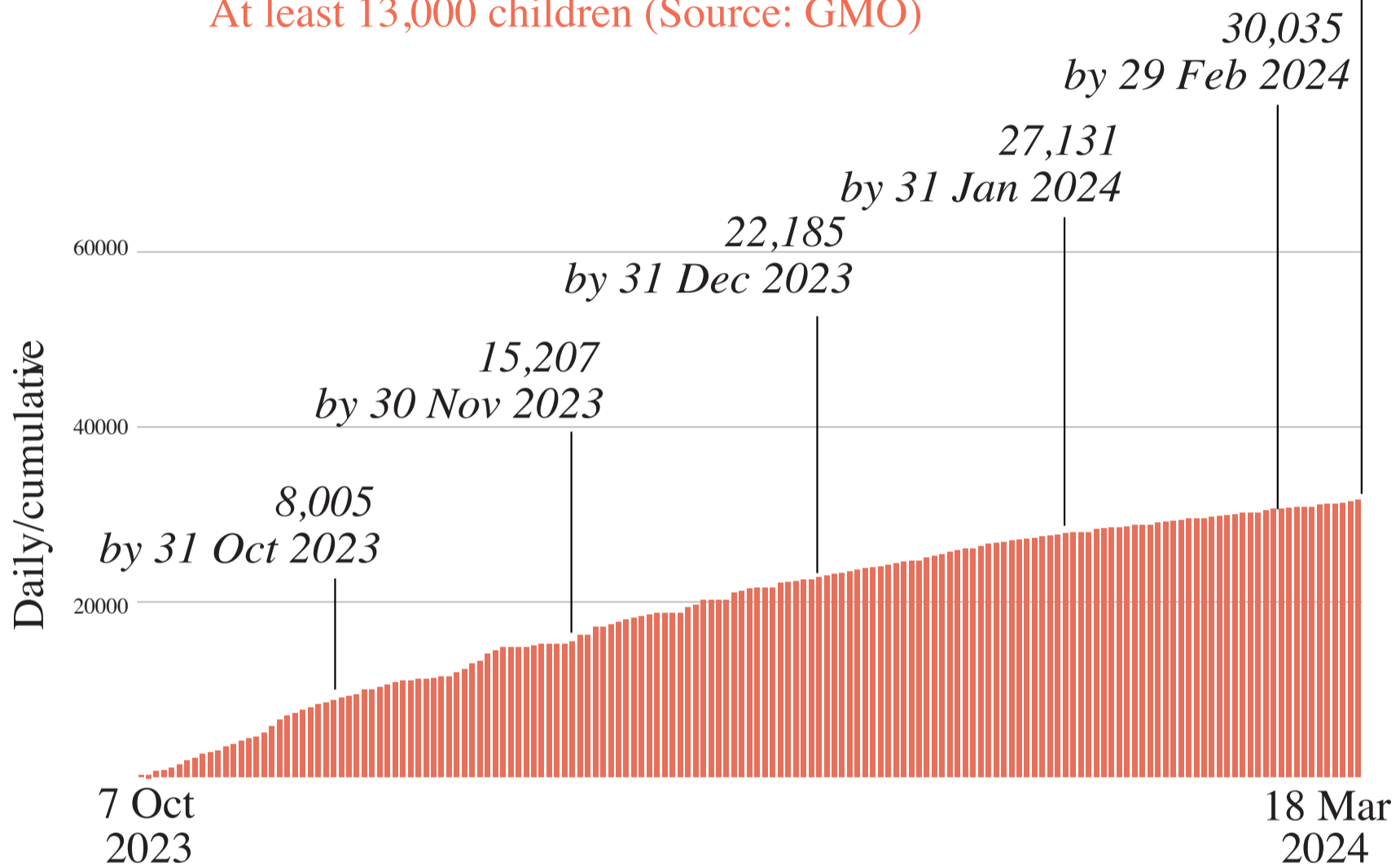
## Palestinians\*

# 31,726

### Reported fatalities including

At least 9,000 women (Source: MoH Gaza)

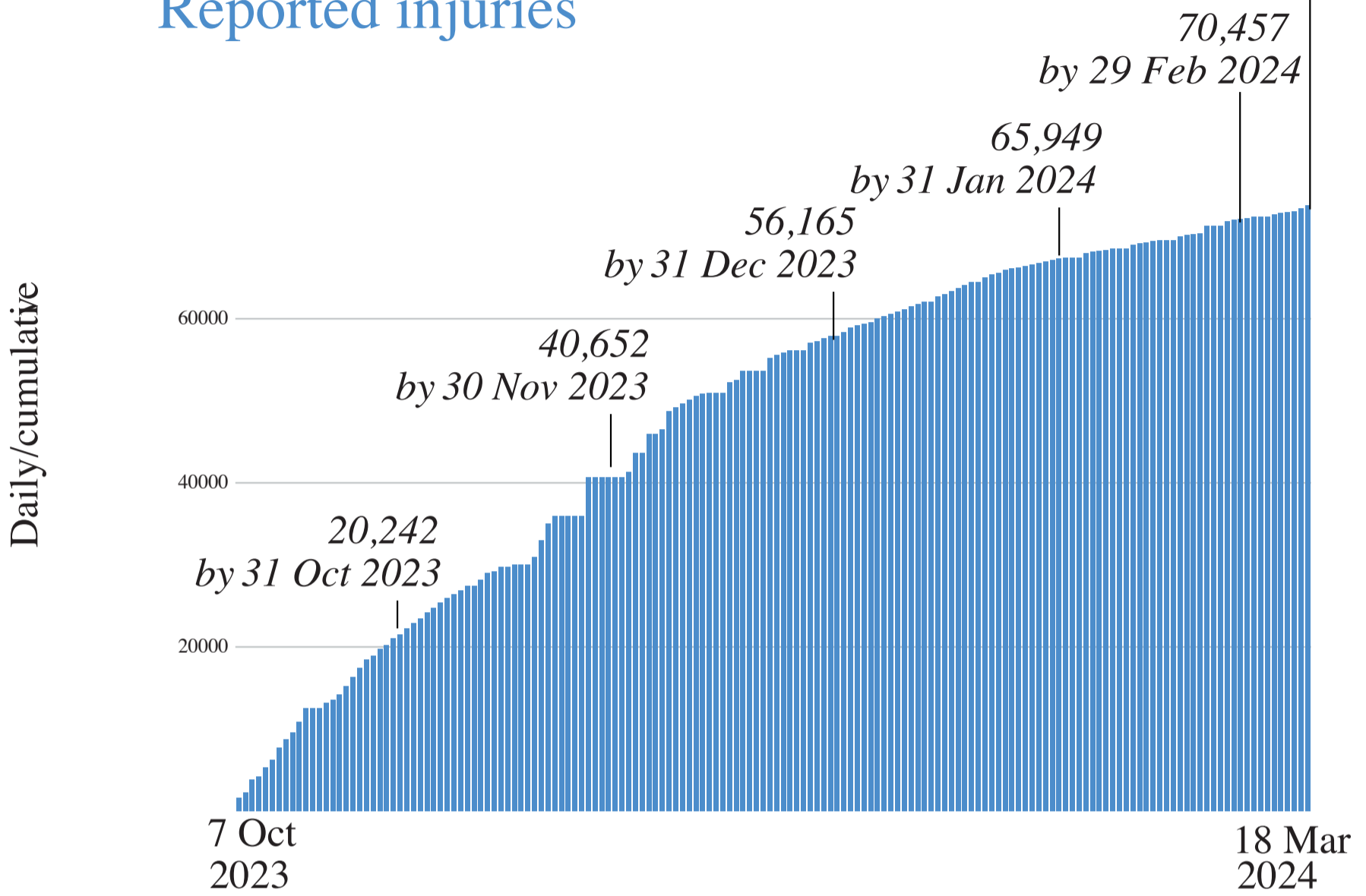
At least 13,000 children (Source: GMO)



Not including more than 7,000 reported missing or under the rubble (Source: GMO)

\*Source: MoH Gaza

# 73,792 Reported injuries



*\*Source: MoH Gaza*

*\*Source: MoH Gaza*

# Israelis\*\*

## Israel

 Over **1,200**<sup>\*\*\*</sup> Reported fatalities

 1,162 identified fatalities,  
including at least 33 children

 ~**5,400** Reported injuries

## Gaza\*\*\*\*

 **248** Reported fatalities  **1,482** Reported injuries

**134 hostages remain in Gaza**

\*\* According to Israeli media citing official sources

\*\*\* This includes fatalities on 7 October and the immediate aftermath, including foreign nationals.

\*\*\*\* The reported Israeli casualties are soldiers killed or injured since the start of the ground operation.



## HEALTH

- **12** hospitals partially functioning (6 in north and 6 in south of Wadi Gaza).
- **2 out of 3** field hospitals are fully functional.
- **~24%** of primary health care facilities are functional.
- **>300,000** reported cases of acute respiratory infections.
- **>200,000** reported cases of acute watery diarrhea.
- **17** Emergency Medical Teams (EMTs) are operational.



## NUTRITION

- **31** people, including 27 children died of malnutrition & dehydration (source: MoH Gaza).
- **~16%** of children under the age of two in northern Gaza suffer from acute malnutrition.
- **~5%** of children under the age of two in Rafah suffer from acute malnutrition.



## EDUCATION\*

- **625,000** students with no access to education.
- **>5,000** students and **>240** teachers have been killed.
- **>60%** of schools sustained damage (~350 out of 563).

\*Source: MoE, as of 13 February



## PROTECTION

- **~1.7 million** internally displaced persons.

- **>1 million children** in need of mental health and psycho-social support.
- **~17,000** children are unaccompanied or separated from their parents



## FOOD SECURITY

- **265K** people facing crisis levels of food insecurity (*IPC Phase 3*).
- **854K** people facing emergency levels of food insecurity (*IPC Phase 4*).
- **1.1 million** people facing catastrophic levels of food insecurity (*IPC Phase 5*).

\* Source: IPC projection for 16 March - 15 July 2024

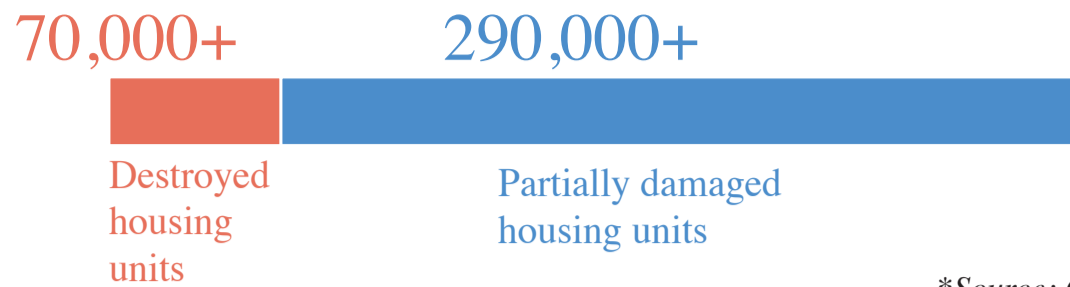


## WATER AND SANITATION

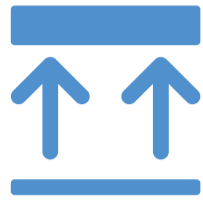
- **One out of three** water pipelines coming from Israel is operational, only at **42%** of its full capacity.
- **83%** of groundwater wells are not operating.
- **All** wastewater treatment systems are non-operational; one of them is partially working.
- **No access** to clean water in the northern governorates.
- **Two out of three** main water desalination plants are partially functional.
- **~57%** of assessed WASH facilities damaged/destroyed.

## REPORTED DAMAGE\*

- **Over 60%** of housing units.
- **At least 3** churches and **223** mosques.
- **155** health facilities (source: MoH Gaza).
- **126** ambulances (source: MoH Gaza).



\*Source: GMO



## HUMANITARIAN OPERATI

- **171** UN staff killed:  
UNRWA: **168**; WHO: **1**; UNDP: **1**; UNOPS: **1**
- **348** health workers killed (source: MoH Gaza).
- **48** Civil Defence killed while on duty (source: GMO).
- **14** PRCS staff killed (source: PRCS).



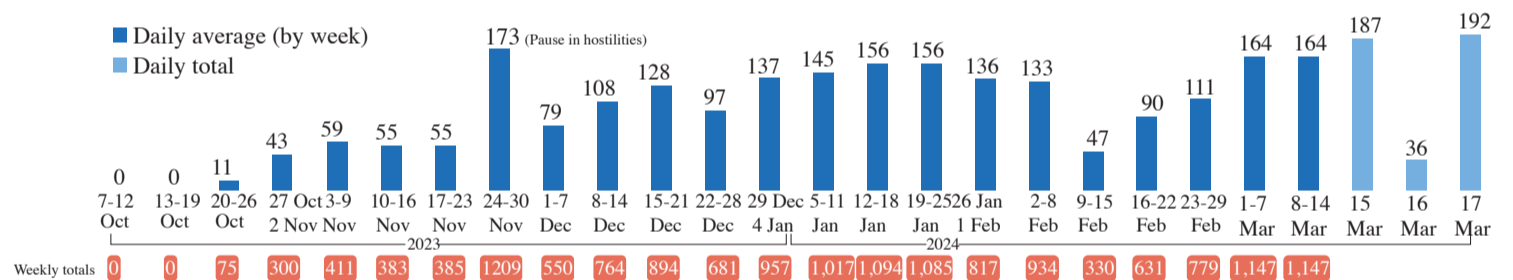


# MOVEMENT AND ACCESS

- Between 1 and 15 March, **12** humanitarian aid missions to northern Gaza were facilitated by the Israeli authorities, **5** were denied, and **7** were postponed.
- **>8,000** patients are currently on the waiting list for medical referral abroad.
- **2,613** medical referrals abroad, including 1,698 wounded and 915 ill, along with 1,785 companions (source: WHO).

## INCOMING TRUCKLOADS

The pre-crisis average per working day in 2023 was **500 truckloads, including fuel.**



Disclaimer: The UN has so far not been able to produce independent, comprehensive, and verified casualty figures; the current numbers have been provided by the Ministry of Health or the Government Media Office in Gaza and the Israeli authorities and await further verification. Other yet-to-be verified figures are also sourced.