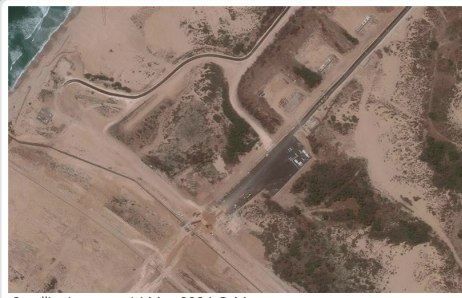


GAZA STRIP: HUMANITARIAN ACCESS CONSTRAINTS

24 May 2024



Erez West (As-Siafia/Zikim)
Open for pre-approved goods since 12 May

Erez
Currently closed after opening from 1 to 9 May

JLOTS (Joint Logistics Over-The-Shore):
A 550-m long floating dock for the delivery of humanitarian cargo, open since 16 May.



JLOTS

Al Rasheed coastal road: A lengthy and overcrowded route designated for the passage of humanitarian aid trucks by the Israeli authorities

Mediterranean Sea
ACCESS PROHIBITED

Al Rasheed checkpoint
Israeli Military Road
Salah Ad Din checkpoint

Recent evacuation orders were issued by Israeli forces on 11, 14 and 15 May.

Nahal Oz
Closed since 2010
Karni
Closed gradually between 2007 and 2011

Al Rasheed coastal road: A lengthy and overcrowded route designated for the passage of humanitarian aid trucks by the Israeli authorities

High Risk Areas Military zone or military operations

- Red line: Passage of humanitarian aid requires coordination with Israeli military
- Blue line: Accessible for humanitarian aid
- Brown line: Military road
- Black line: Bad road conditions
- Blue circle with white border: Holding point is the waiting point to request coordination with Israeli military before heading to the checkpoint
- Red circle with white border and 'X': Israeli checkpoint (long delays, congestion and frequent closures)
- Red circle with white border and 'T': Currently closed
- Blue circle with white border and 'T': Open for pre-approved goods and/or people
- Grey circle: Permanently closed Crossing
- Blue icon with 'T': JLOTS: Joint Logistics Over-The-Shore

Gate 96
Closed since 30 April 2024

Deir al Balah

Israeli military fence road:
only accessible after dark for pre-approved goods.

Salah Ad Din Road: Main road to cross between North and South (risk of congestion)

Khan Younis

Rafah
Bad road conditions

Sufa
Closed since 2008 (except Mar-Apr 2011)

Rafah
Closed since 7 May

Kerem Shalom
Designated for pre-approved goods when open and currently the only available crossing for people; since 8 May, no safe access from within Gaza and not logistically viable

EGYPT

Recent evacuation orders issued by Israeli forces on 6 and 11 May.

Number of drivers and trucks cleared by Israel to use fence road is insufficient to meet demand, causing delays and fewer aid deliveries than planned.



Kerem Shalom crossing, 3 May 2024